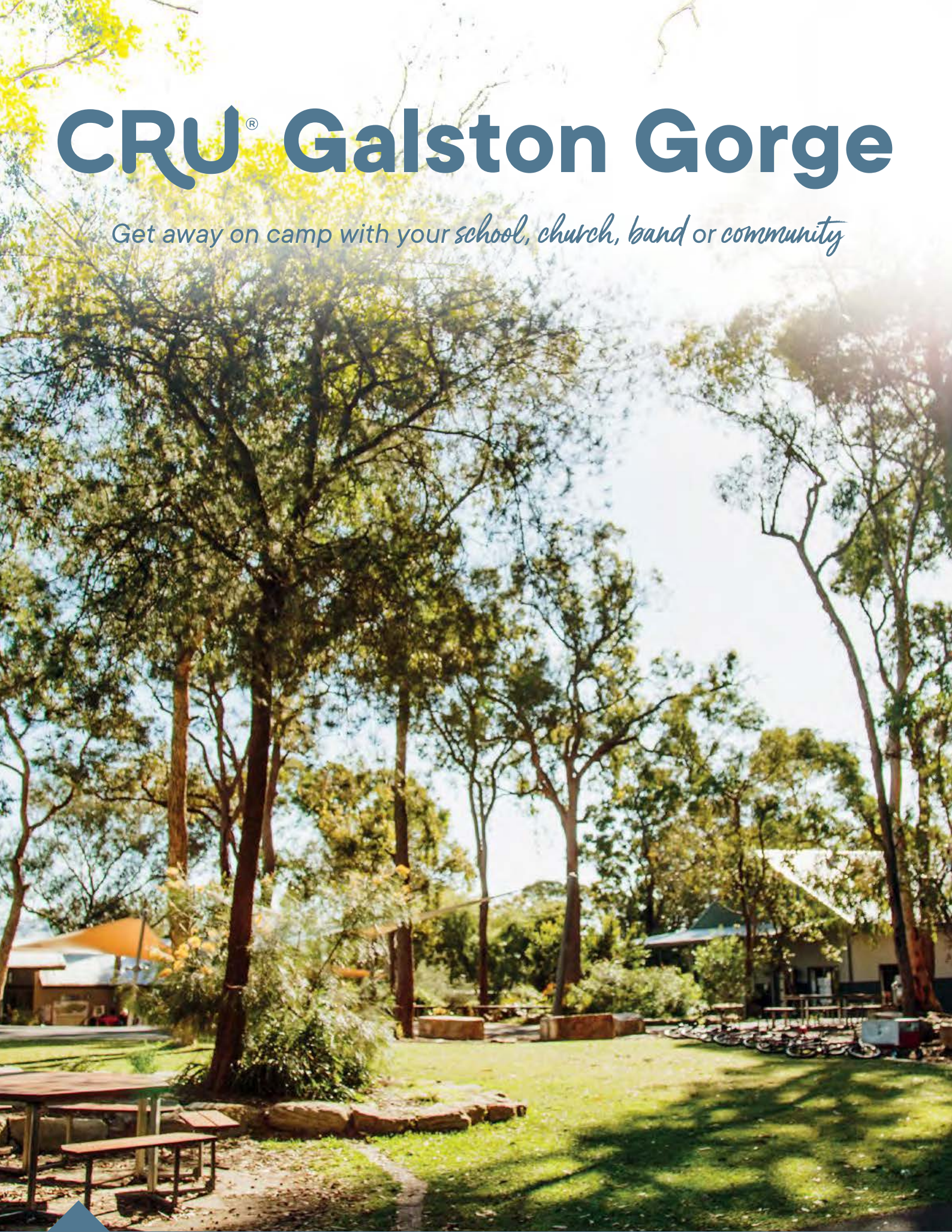


# CRU<sup>®</sup> Galston Gorge

*Get away on camp with your school, church, band or community*





**CRU Galston Gorge is a tranquil bush hideaway, conveniently located just 15 minutes from Hornsby and 45 minutes from Sydney's CBD.**

# Contents

About CRU®	3
About CRU Galston Gorge	4
The ideal camp venue	5
Meeting rooms to suit your group size	7
Breakout and small meeting rooms	11
Galston Gorge site map	13
Accommodation	15
Feast at Galston Gorge	19
Special dietary requirements	21
Multi-purpose gymnasium	22
Activities	23





# About CRU®

CRU® is a Bible-based, interdenominational Christian organisation whose mission is to help the kids and youth of Australia know and follow Jesus.

CRU runs CRU Holiday Camps and CRU Educational Camps for thousands of kids each year, and supports chaplains, teachers and students in Christian ministry in their schools and lunchtime CRU Groups. CRU also operates two campsites, CRU Galston Gorge and CRU Lake Mac. We welcome bands and school groups as well as community and church groups to our sites.

To find out more about CRU, head to our website [www.cru.edu.au](http://www.cru.edu.au)



CRU® | Holiday Camps



CRU® | Groups



CRU® | Educational Camps



CRU® | Lake Mac

## About CRU® Galston Gorge

Nestled on the edge of Galston Gorge, in a relaxing bushland setting, only 45 minutes from Sydney's CBD, and 15 minutes from Hornsby, CRU Galston Gorge Camp & Conference Centre awaits your next camp, getaway or retreat.

In the tranquil beauty of Galston Gorge enjoy:

- Modern conference facilities
- Multiple breakout areas and meeting spaces
- Comfortable, modern accommodation with A/C
- Up-to-date WiFi, tech and A/V capabilities
- A wide range of exciting activities





# The *ideal camp venue* for any group

No matter what kind of camp, retreat or getaway you are planning, CRU® Galston Gorge has the accommodation options, facilities and activities you are looking for. Our experienced bookings team will work with you as you plan your event and our friendly site staff will welcome you when you arrive and make sure you have a comfortable stay.



## School camps



Want to run your own school leadership program, outdoor activity camp or study skills session? CRU Galston Gorge has everything you need on site including fully equipped meeting rooms, breakout spaces, delicious snacks and meals, and comfortable beds. Plenty of free on-site activities add to the fun, with extra instructor-led activities available at additional cost. Or choose a CRU Educational Camp with our qualified, experienced team. Since 1988 we've partnered with over 150 schools to provide fully programmed camps. Chat with us to find out more.

## Band and music camps



Put the spotlight on the arts for a few days together and watch your young musicians, singers and performers flourish and thrive. Use the CRU Galston Gorge breakout rooms for tutorials, workshops and rehearsals, and reconnect in the large meeting and performance spaces. A spectacular location for community bands, school bands and orchestras, choirs, vocal groups or performance groups.

## Church camps, conferences and retreats



Take some uninterrupted time in a peaceful location to relax, reconnect and rebuild with your church family, youth group or ministry team. Large meeting spaces are great for talks, worship and seminars. Use our smaller rooms for prayer and discussion groups. Eat, enjoy and energise together. Strengthen relationships as you participate in on-site activities and connect with each other and God in beautiful surroundings.

## Community groups, sports camps and family reunions



Whether your special interest is craft and photography, sport or service, or you're planning an extended family reunion there's space for your group getaway at CRU Galston Gorge. Explore your common interests in a beautiful location, relish delicious meals together, and enjoy the range of on-site activities for a time to remember.



# Meeting rooms

## To suit your group size

Whether you need a small meeting room for workshops or discussion groups, or a multipurpose gymnasium with a large stage for a band performance, at CRU Galston Gorge guests can access meeting rooms, conference facilities and indoor and outdoor breakout spaces in a range of sizes and configurations.



	Multipurpose Gymnasium	Valleyview Conference Room	Eaglesview Conference Room
<b>Capacity</b>	600+	180	160
<b>Size</b>	748m <sup>2</sup>	180m <sup>2</sup>	144m <sup>2</sup>
<b>Air conditioning</b>	N (Fan ventilation)	Y	Y

### Conference rooms and the Gym have:



A/V



Whiteboards



WiFi



Access to tables



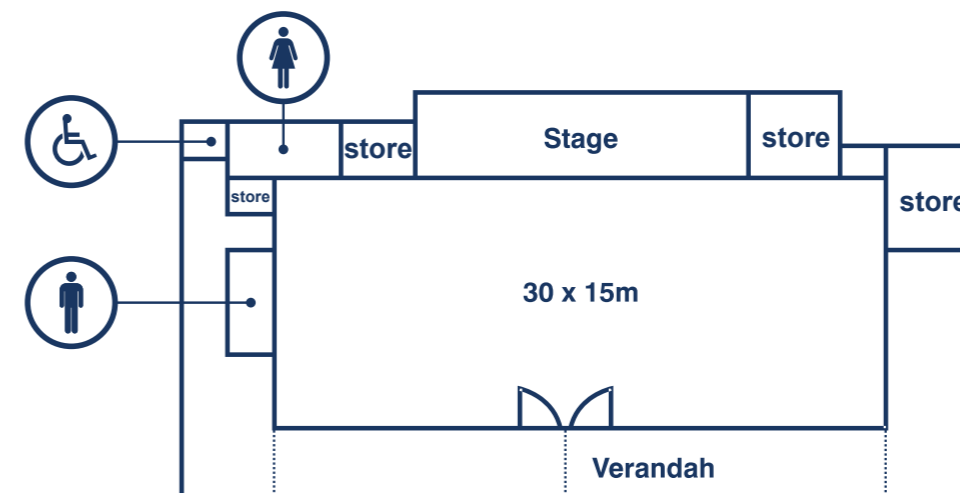
Mobile phone coverage



Wheelchair access

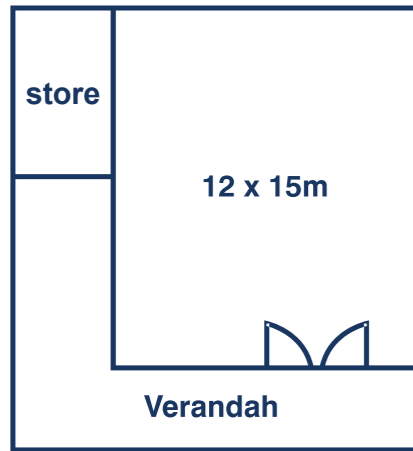
## Multipurpose Gymnasium

This exceptional space can seat more than 600 guests and is perfect for large conferences and presentations. The large stage area is ideally suited to musical performances and concerts. The building serves as a multifunctional space with an indoor high ropes course and a basketball court, suitable for a range of sports, indoor games and team building activities.

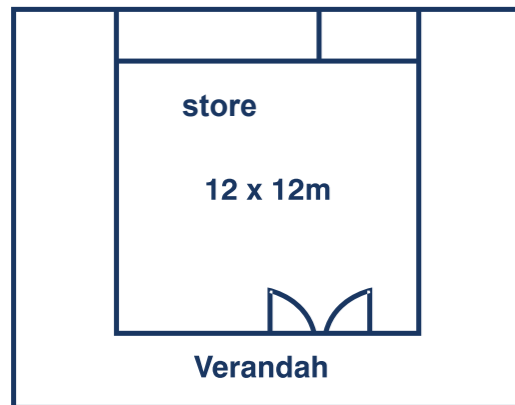


Flexible layout options





Flexible layout options



Flexible layout options

## Valleyview Conference Room

Designed for groups of up to 180, Valleyview can accommodate lectures, seminars, study sessions, rehearsal groups and a variety of other events in air-conditioned comfort.

## Eaglesview Conference Room

Eaglesview seats up to 160 guests and can be used as a second large space for talks, activity groups and seminars.



# Outdoor breakout spaces



*There's nothing like taking your small group outside in the fresh air.*

## Picnic tables

Our many picnic tables are purpose-built to host small gatherings.

## Shade sails

Gather a large or small group under a shade sail for discussions, briefings or games.

## Outdoor Amphitheatre

Make the most of being nestled on the edge of the peaceful Aussie bush and gather outdoors. Up to 150 people can enjoy a day or evening campfire in this space.





# Breakout & small meeting rooms

Smaller meeting rooms are useful for breakout or discussion groups or band section rehearsals. Our 12 breakout spaces and small meeting rooms can seat from 10 to 60 people.

All spaces have WiFi and mobile phone coverage, as well as flexible layout options with chairs and tables.

	No. of rooms	Dimensions	Capacity	A/C	Whiteboard	A/V	Wheelchair access	WiFi
<b>The Hub</b>	1	84m <sup>2</sup>	60	Y	Y	Y	Y	Y
<b>Lyrebird</b>	1	54m <sup>2</sup>	50	Y	Y	Y	Y	Y
<b>Ridgeside</b>	1	54m <sup>2</sup>	50	Y	Y	AOR*	Y	N
<b>Treetops</b>	1	36m <sup>2</sup>	30	Y	Y	AOR*	Y	N
<b>Guest Lodge Lounges</b>	6	27m <sup>2</sup>	12	N	AOR*	AOR*	N	N
<b>Leaders Lounge Room</b>	1	75m <sup>2</sup>	Lounges for 16 teachers	Y	AOR*	AOR*	Y	Y

Guests have access to the lounges of the cabins they have booked. \*AOR: Available On Request



## Guest Lodge Lounges

Seating for a group of 12 in our guest lodge lounges.

## Lounge Room

Perfect for use as a 'leaders retreat' with open fireplace, WiFi and tea and coffee making facilities, this is conveniently located at one end of the dining hall. Access to the lounge room may be shared when there are multiple groups on site.

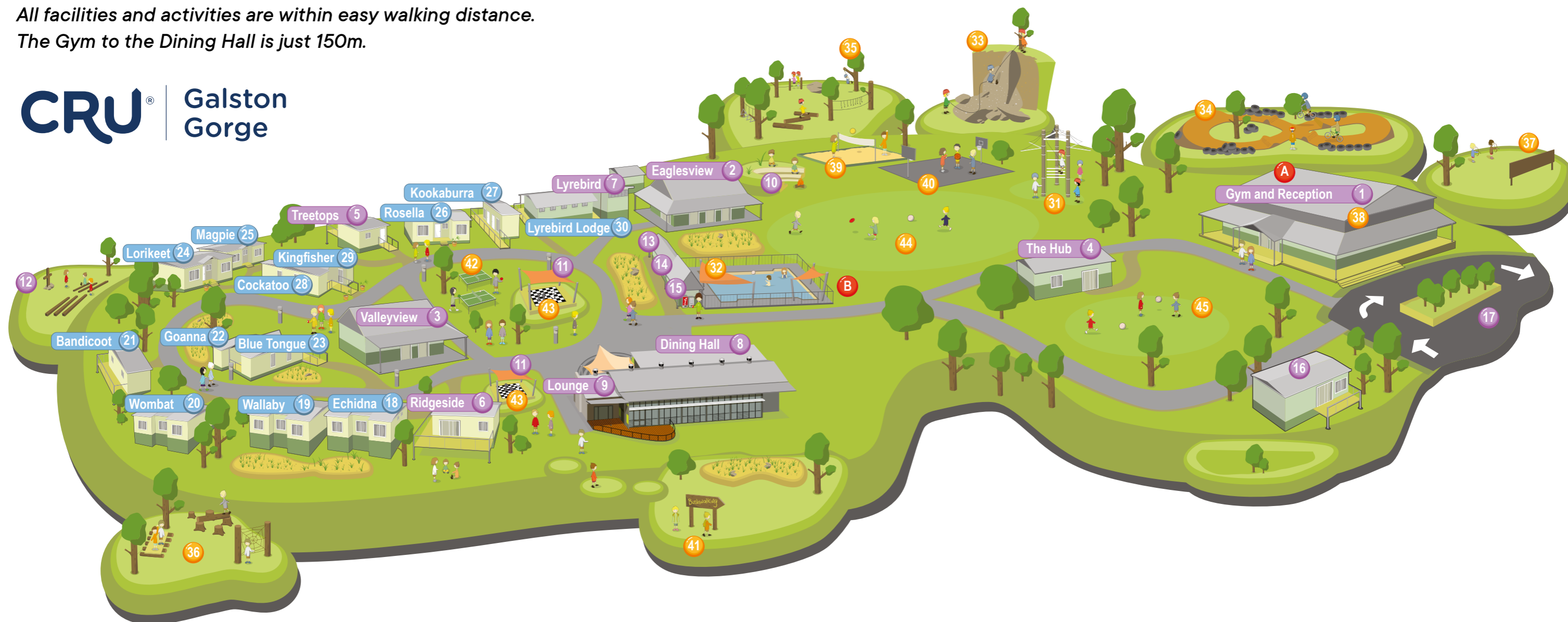


# Site Map

All facilities and activities are within easy walking distance.

The Gym to the Dining Hall is just 150m.

**CRU**® Galston Gorge



## Conference Facilities

- 1 Gym and Reception
- 2 Eaglesview Conference Room
- 3 Valleyview Conference Room
- 4 The Hub
- 5 Treetops Meeting Room
- 6 Ridgeside Meeting Room
- 7 Lyrebird Meeting Room
- 8 Dining Hall
- 9 Lounge with fireplace
- 10 Amphitheatre & Campfire
- 11 Outdoor Activity Shelters
- 12 Bush Chapel
- 13 Laundry
- 14 Pool Bathrooms
- 15 Kiosk
- 16 Office
- 17 Parking Area

## Accommodation

- 18 Echidna Lodge
- 19 Wallaby Lodge
- 20 Wombat Lodge
- 21 Bandicoot Lodge
- 22 Goanna Lodge (wheelchair friendly)
- 23 Blue Tongue Lodge
- 24 Lorikeet Lodge
- 25 Magpie Lodge
- 26 Rosella Lodge
- 27 Kookaburra Lodge
- 28 Cockatoo Lodge
- 29 Kingfisher Lodge (wheelchair friendly)
- 30 Lyrebird Lodge

## Activities

- 31 Vertical Challenge High Ropes Course
- 32 20m Pool
- 33 Abseiling
- 34 BMX Track
- 35 Low Ropes Course
- 36 Initiatives Course
- 37 Archery Course
- 38 Indoor Rock Climbing Wall
- 39 Beach Volleyball Court
- 40 Basketball / Netball Court
- 41 Bushwalking Tracks
- 42 Table Tennis
- 43 Giant Chess
- 44 Oval 1
- 45 Oval 2
- A Emergency Assembly Area A
- B Emergency Assembly Area B



# Accommodation

CRU Galston Gorge can accommodate 220 overnight guests in its comfortable, air-conditioned lodges with ensuites. Three accommodation clusters on site provide flexibility for multiple guest groups, with guest lodges and separate leaders' lodges that are ideal for teachers, guest speakers or leaders.



Guest Lodges		Leaders Lodges	Wheelchair-friendly Lodges
<ul style="list-style-type: none"> <li>Echidna</li> <li>Wallaby</li> <li>Wombat</li> <li>Bandicoot</li> <li>Lorikeet</li> <li>Magpie</li> </ul>	<ul style="list-style-type: none"> <li>Rosella</li> <li>Kookaburra</li> <li>Lyrebird</li> <li>Cockatoo</li> <li>Blue Tongue</li> </ul>	<ul style="list-style-type: none"> <li>Bandicoot</li> <li>Kookaburra</li> </ul>	<ul style="list-style-type: none"> <li>Goanna</li> <li>Kingfisher</li> </ul>



**Ensuite bathrooms**



**Lounge area**  
Seating for 12 people.



**Air conditioning**

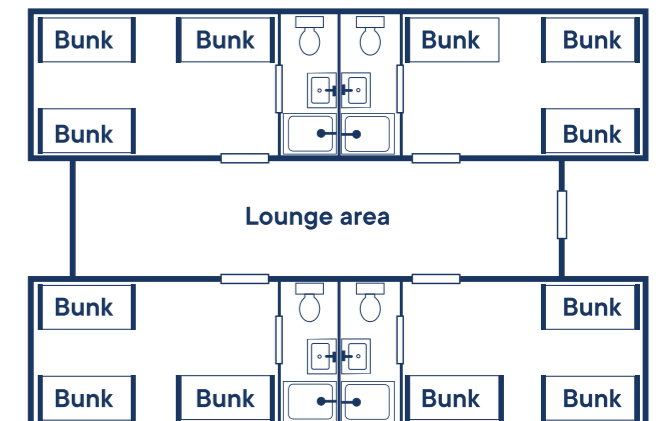
Reverse cycle air conditioning for comfort all year round.



**Linen hire available**

Campers may bring their own linen or hire from us. Bring your own pillow.

## Guest Lodges



Typical room configuration. Some rooms may be different. Contact us for more information.



# Leaders Lodges



**Air conditioning**  
Reverse cycle air conditioning for comfort all year round.



**Balcony**  
Enjoy expansive bushland views and a covered verandah.



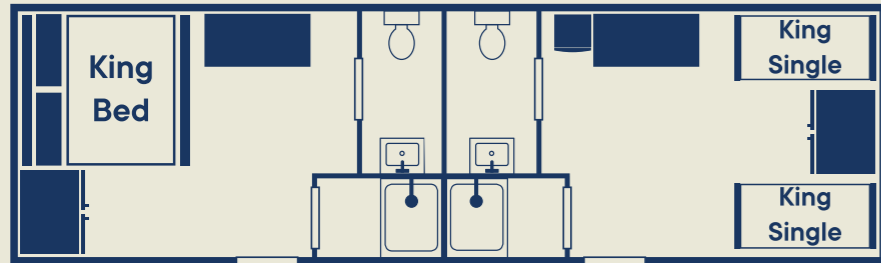
**Ensuite bathrooms**



**Leader comfort**  
A desk and reading lamps make for a happier stay.



**2 king single beds**  
*(in Bandicoot and Kookaburra)*  
Two king singles in each room or one king double upon request.



# Wheelchair-friendly Lodges



**Accessible ensuite bathroom**



**2 accessible rooms**  
2 bunk beds in each room.



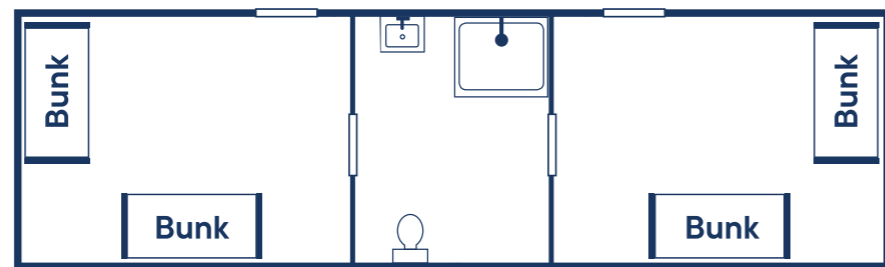
**Air conditioning**  
Reverse cycle air conditioning for comfort all year round.



**Covered verandah**  
Enjoy expansive bushland views.



**Linen hire available**  
Campers may bring their own linen or hire from us. Bring your own pillow.



# Eco-friendly

CRU Galston Gorge values being eco-friendly and sustainable.



**Recycling**  
Every year we recycle 3 million litres of waste water.



**Sustainability**  
Our solar power generation is enough to make 1.9 million pieces of toast a year.



**Efficiency**  
Upgraded LED lighting is more energy-efficient.



**Staying local**  
We support our local community by using local trades, suppliers and produce.



# Feast at Galston Gorge

Ask campers what they remember about their time at Galston Gorge and they'll enthuse about the food. It's high quality, fresh, nutritious and delicious—and there's plenty of it!

With years of camping experience, we understand both what campers need, and what they enjoy when it comes to food. Our popular menus include three meals and three snacks a day. Breakfast, lunch and dinner are served buffet style so campers can choose what they like.

Eating together isn't just about getting refuelled for more activities and learning. It's a time of making friendships, creating memories and sharing lives.

Meals are served either indoors in the air-conditioned Dining Hall or outdoors on the large deck overlooking Galston Gorge.



## Sample menu

Day*	Hot Breakfast	Lunch	Dinner	Dessert
Day 1	Pancakes	Beef burger and wedges	Schnitzel with layered potatoes, gravy, vegies and garlic bread	Danish and custard
Day 2	Cheese and ham croissants	Chicken wraps	Massaman beef curry with rice and vegies	Chocolate mousse
Day 3	Bacon and egg served with an English muffin	Pizza	Chicken pie with mashed potato and vegies	Waffles with cream and maple syrup



## Delicious food



A variety of salads including kid-friendly salads are served with every lunch and dinner.



Café-style coffee machines, with tea and hot chocolate are always available, keeping you going throughout the day.



Get a good start to your action-packed day with our delicious breakfast options that include a hot menu plus a buffet of cereals.



Morning tea, afternoon tea and supper include a range of fruit, savoury snacks and sweet treats.



We have experience with catering for people with allergies and special diets. Just tell us what you need.

Please contact the Bookings Manager on (02) 9653 1676 (opt. 2) or [groupbookings@cru.edu.au](mailto:groupbookings@cru.edu.au) to discuss your needs.



# Special dietary requirements



## We want everyone to feel welcome at camp.

We are delighted to offer a solution for your dietary needs.

See the sample menu on page 19 to assist those needing to bring their own supplements from home. Fridge and freezer space is available as well as a microwave for reheating and a gluten free toaster.

Please contact the Bookings Manager on (02) 9653 1676 (opt 2) or [groupbookings@cru.edu.au](mailto:groupbookings@cru.edu.au) to discuss your specific dietary needs.



## The site is allergy aware.

### ALLERGIES AND ANAPHYLAXIS TO VARIOUS FOODS

The site does not use whole nuts or nut pieces, however, as a commercial kitchen, we cannot provide food that is free of traces of nuts or other allergens or guarantee that a special diet is free from cross-contamination with other food items. If there is any concern, guests are recommended to bring their own food. We do not provide food for all dietary needs. Please contact the Bookings Manager on (02) 9653 1676 (opt 2) or [groupbookings@cru.edu.au](mailto:groupbookings@cru.edu.au) for further information.

# Multi-purpose gymnasium

No need to worry about the weather. Our multifunctional gym boasts an indoor basketball court and climbing wall as well as a high ropes course, a huge seating capacity and a large stage.



## Duke of Edinburgh

Our site is perfect for introductory Duke of Ed programs. CRU Educational Camps can tailor a program to suit your group's needs.





## On-site free *activities*

Create connection and build confidence during your stay with our range of complimentary activities. Take a splash in the pool, wander through the bushwalking tracks, or get competitive with table tennis or chess.

- 20m swimming pool
- Beach volleyball
- Indoor and outdoor basketball/netball courts
- Bushwalking tracks
- Professional sports gymnasium for indoor games
- Games oval
- Sports kits for cricket, football, soccer
- Campfire
- Table tennis
- Giant chess
- Gaga ball pits







# Additional activities

Add extra fun and challenges to your camp with our range of optional instructor-led activities.

- Indoor crate climb
- Damper cooking
- Laser tag
- Archery range
- BMX track and bikes
- Abseiling
- Challenge course
- Low ropes course
- Vertical challenge high ropes course
- Indoor high ropes
- Indoor rock-climbing wall

To discuss your group's specific requirements and costs contact our Bookings Manager at (02) 9653 1676 (opt. 2) or [groupbookings@cru.edu.au](mailto:groupbookings@cru.edu.au)





# BOOK TODAY



[www.crugalstongorge.com.au](http://www.crugalstongorge.com.au)



(02) 9653 1676 (opt. 2)



[groupbookings@cru.edu.au](mailto:groupbookings@cru.edu.au)



**Galston  
Gorge**

The Crusader Union of Australia  
ABN 90 213 359 332 | (02) 9653 1676 (opt.2)  
8 Crusader Rd, Galston NSW 2159  
[groupbookings@cru.edu.au](mailto:groupbookings@cru.edu.au)